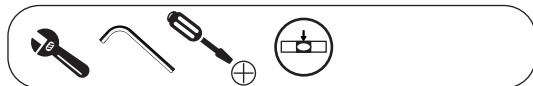
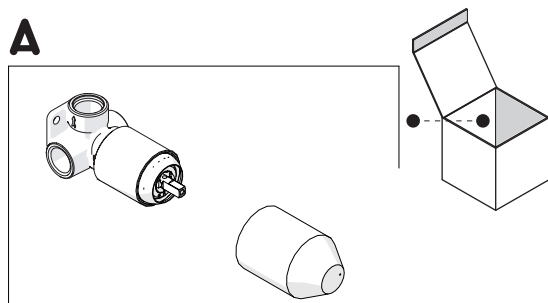


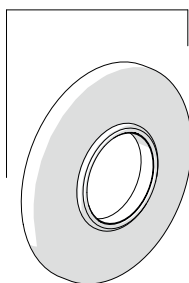
Not included



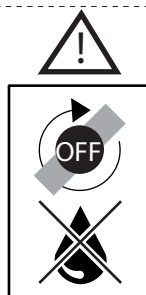
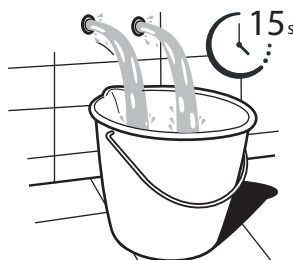
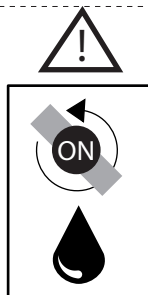
A



B

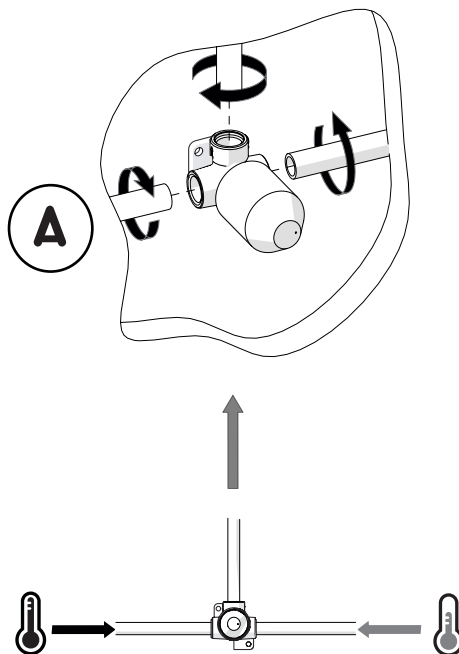


C



1

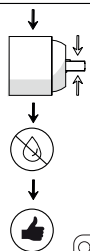
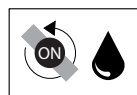
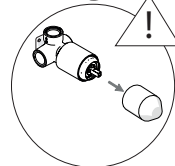
A



2

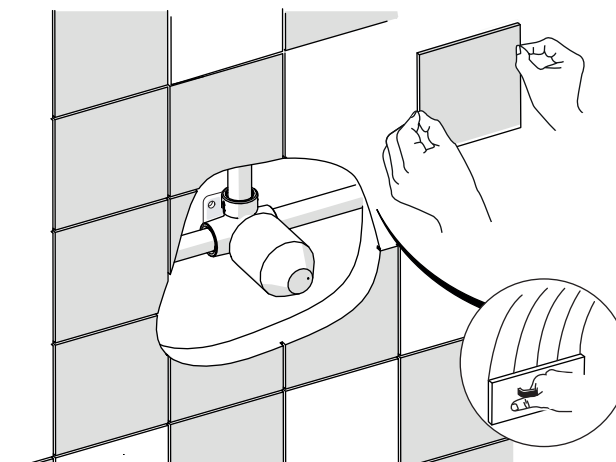


TEST

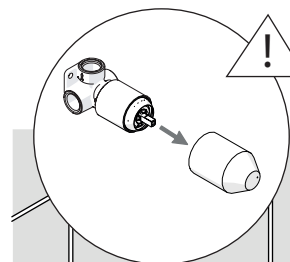


NOTE:
Galvin Specialised products must be installed in accordance with these installation instructions and in accordance with AS/NZS 3500

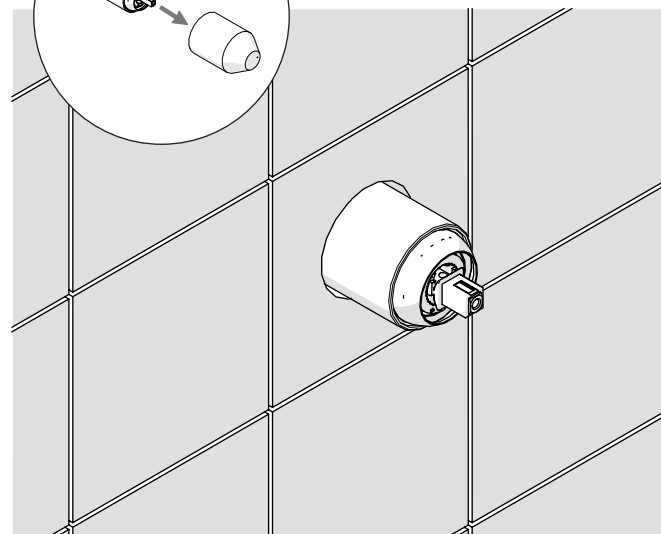
3



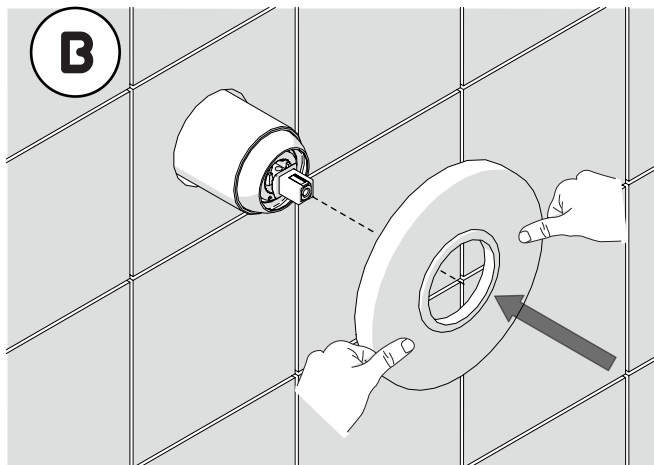
4



5

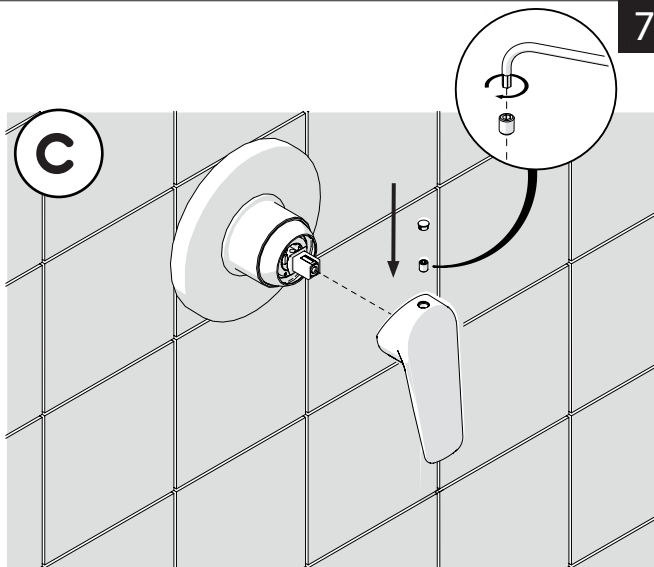


6



NOTE:
Seal the faceplate to the wall
using a suitable sealant

7

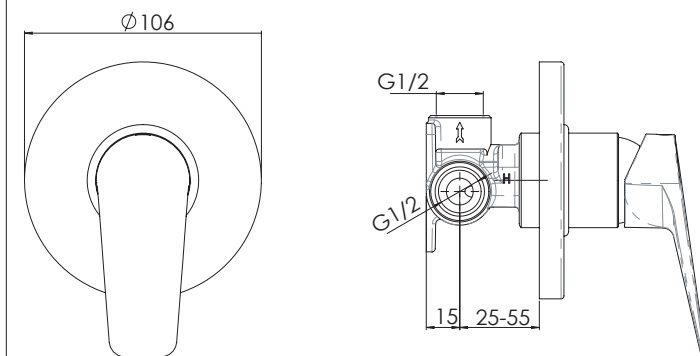


8

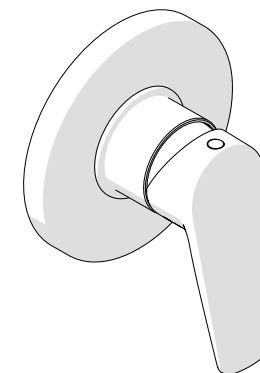


TECHNICAL DRAWING
ITEM CODE: TM-SHWCP

9



galvinspecialised
commercial taps + fixtures



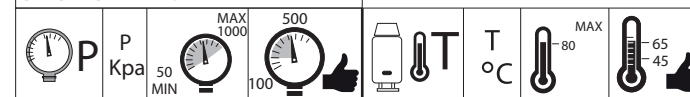
TM-SHWCP

GalvinAssist™ Single Lever Shower Mixer



AS/NZS 3718
LN:1400

BEFORE STARTING



CLEANING

